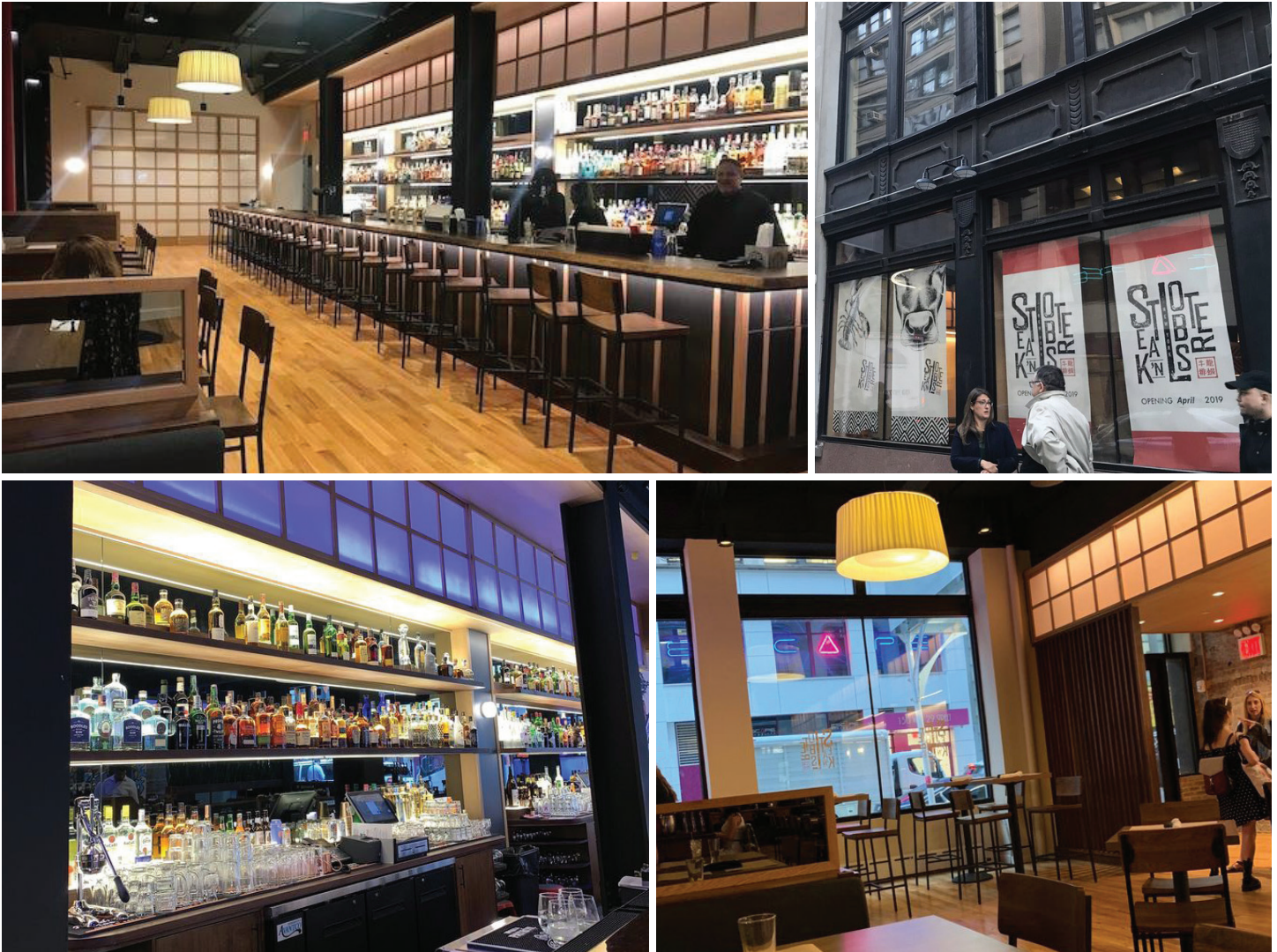


# STEAK 'N LOBSTER RESTAURANT

129 West 29th Street, New York, NY



## *Description*

The Steak 'N Lobster Restaurant in Chelsea provides a Japanese twist on the classics of grass-fed Angus Beef and fresh Maine Lobster. Ryan Soames Engineering was brought in by ownership to collaborate with the client team on a design-build approach for the MEP-FP engineering and consulting for the spacious two-level restaurant. The restaurant provides a 5,000 square foot ground floor open dining space, with a kitchen, private dining room, and full bar, while the 3,500 square foot cellar level incorporates the restaurant preparation rooms and support spaces with additional space for future private dining areas.