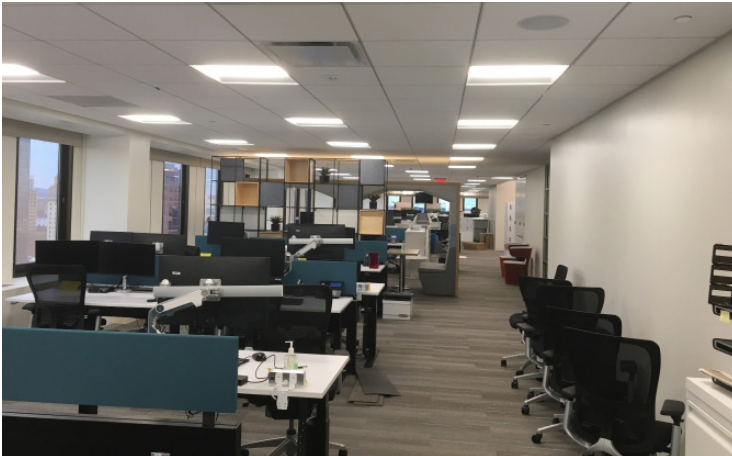
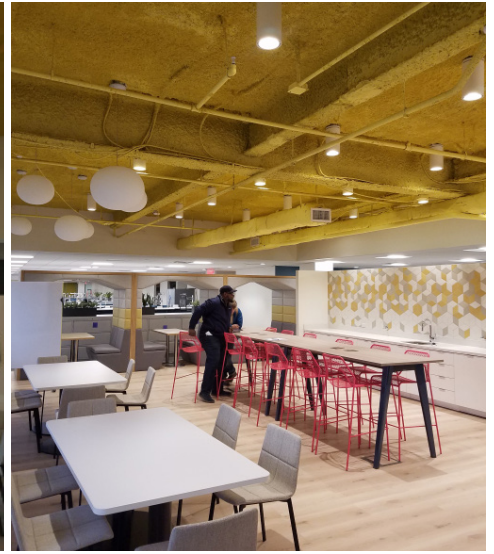
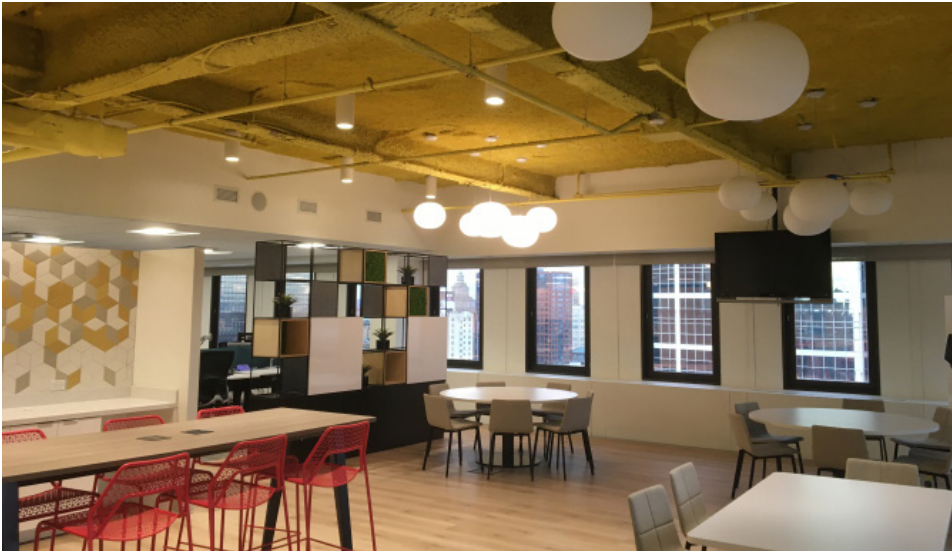


STANDARD CHARTERED BANK

Newark, New Jersey



Description

Ryan Soames Engineering was retained by Standard Chartered Bank for the MEP-FP engineering related to the adaptive reuse of their existing 35,000 square foot office space in Newark. Ryan Soames coordinated with the project team for the surgical design of the existing space under multiple phases while the floor was still occupied and operational, maximizing use of the existing space infrastructure.

Corporation/Client

Standard Chartered Bank

Architect

Ted Moudis Associates

Location

New Jersey