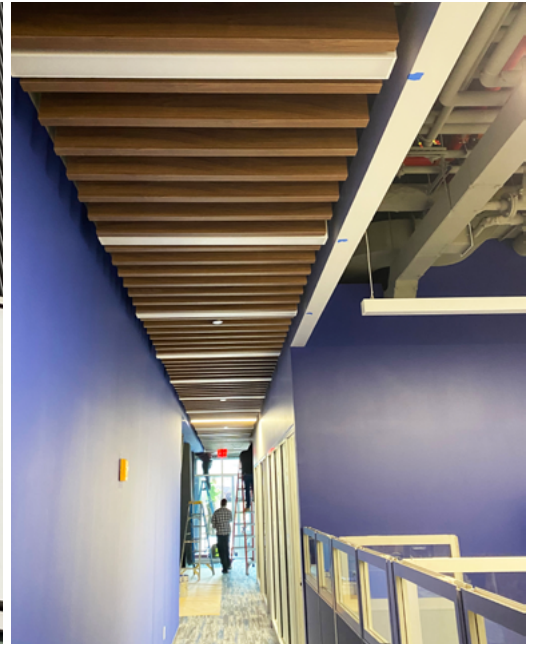


ANTHEM - EMPIRE BLUE CROSS

Flushing, NY



Description

Ryan Soames Engineering was retained by Anthem to provide MEP-FP engineering design for the build-out of their new 15,000 square foot ground floor office space in Flushing, Queens, NY. The project's fully demolished space, included full coordination with the building management to provide all the required services into the space and the provision of post-COVID-19 bipolar ionization filtration equipment to the HVAC systems to clean the air.

The new office space includes meeting rooms, conference rooms, open workstations, pantry, bathrooms, separate staff entry, and main customer lobby.

Corporation/Client

Anthem - Empire Blue Cross

Architect

Dan Ionescu Architects

Contractor

CBG Builders

Locations

NEW YORK